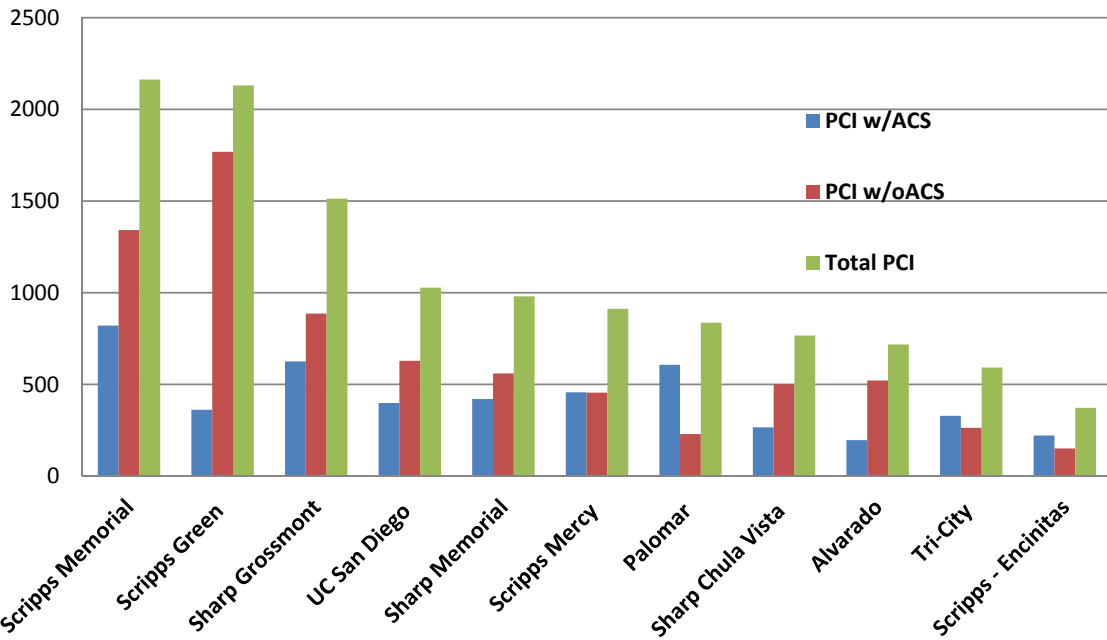


PCI San Diego CA Jan2011-Dec2012



Hospital	PCI w/ACS	PCI w/oACS	Total PCI
Scripps Memorial	821	1,342	2,163
Scripps Green	362	1,769	2,131
Sharp Grossmont	626	887	1,513
UC San Diego	399	629	1,028
Sharp Memorial	421	560	981
Scripps Mercy	457	456	913
Palomar	607	230	837
Sharp Chula Vista	266	501	767
Alvarado	196	522	718
Tri-City	329	264	593
Scripps - Encinitas	222	151	373